

Dual Gauge with Wi-Fi communication

Taiwan Silicon Microelectronics Corporation

<http://www.tsmccomp.com>

address : 2F.-1, No.288-3, Hsin-Ya Rd.,
Kaohsiung City 806, Taiwan (R.O.C.)

Tel: 886-7-861-9786

Email: yp_hsu@tsmccomp.com.tw

Email: harpertw@tsmccomp.com.tw

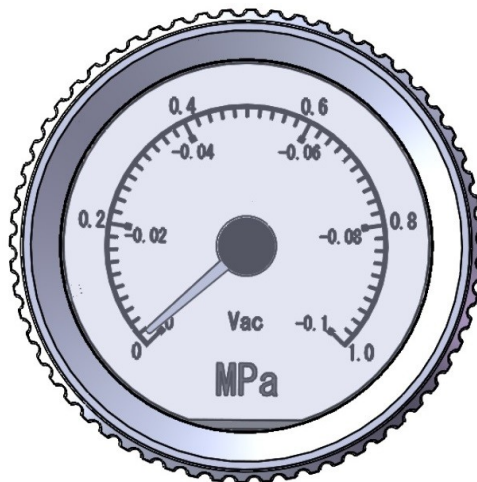
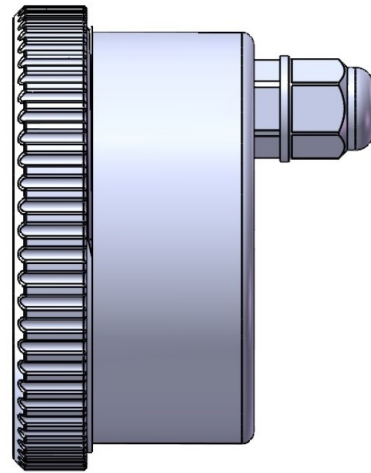
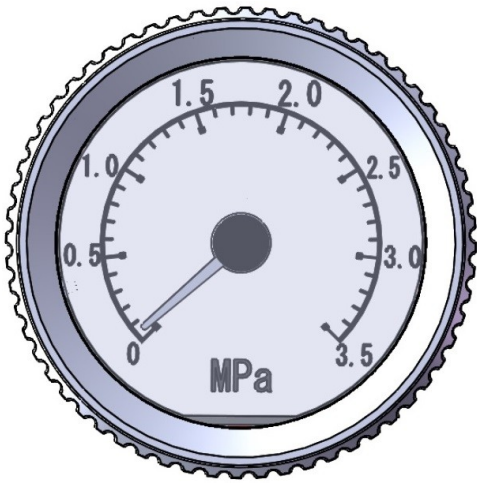
Model name: D25 WiFi series

Specification

Item	Description
Pressure measurement	Accuracy: +/-1%~+/-2%
	Range: customized. -1bar ~350bar
	Port: customized
	Resolution: to be defined
Panel LED color	Green, Red, Blue. Action depends on customized request
	Example : white: pressure<0.2KPa, in real gauge mode <u>Red</u> : pressure>=0.2KPa, in real gauge mode
Indicator	customized request
	example: 0~3.5MPa : 0~270 degree
Serial communication	RS232
RS232 parameter	baud rate: 4800,9600,19200,38400 parity : none, data bit : 8 bit, stop bit : 1 bit
RS232 command	Binary string. Operation mode switching: Real gauge mode: real pressure measurement Remote mode: indicator position programmed by command Remote gauge mode: pressure programmed by command LED control: LED color programmed by command Baud rate setting Current Pressure: read current pressure Write current Pressure: write pressure in remote gauge mode

	Pressure Reset: pressure tare in gauge mode
Light indicated	Connection light and cloud light
Wi-Fi communication:	802.11 b/g/n
	AP(installation/operation), STA(operation)
	Websocket(LAN), MQTT/ MQTTS(LAN/internet)
	WiFi connection light. Flash: try connecting. Bright: connected. Dark: connection lost.
JSON format command/message	<p>Typical command class:</p> <p><u>Device login</u>: authority management</p> <p><u>Device hello</u>: device searching</p> <p><u>Parameters accessing</u>: parameters reading and writing.</p> <p>Measurement polling</p> <p><u>Active measurement message</u>: periodic message or accident event/alarm</p> <p><u>Password management</u></p> <p><u>Text file accessing</u>: for certification file updating</p>
Hex ASCII format command/message(option)	For less payload. For fast command/message decoding.
Cable length	700mm+/-30mm
Terminal signal	Power +(red), power-(black), RS232 RX(blue), RS232 TX(brown).
Power	+10V~+26V
Power consumption	<p>Normal operation: 30mA (all backlight is turned off)</p> <p>Normal operation: 110mA(all backlight is turn on)</p> <p>With WiFi: 210mA</p> <p>Power on: Reach to 300mA and decay to normal current in 50ms</p>
Initial time after input power	3 seconds. (for the mechanical zero position calibration)
Response time of command	1ms or 25ms depended on command. The response time is in 0.05s.
Minimum interval between commands	Due to the rotation speed of indicator, the last command operation may not be completed if the interval of succeed write angle or pressure command is too short.
Operation temperature	-10°C~60°C
Storage temperature	-20°C~80°C

Front and side view



Wire connection

1. Red: V+
2. Black: V-
3. Brown: for RS232 communication RX
4. Blue: for RS232 communication TX